



2017 Pennsylvania Land Trust Census Report

Compiled by the
Pennsylvania Land Trust Association

Land Trusts Expand Conserved Land by 36% in Last Decade

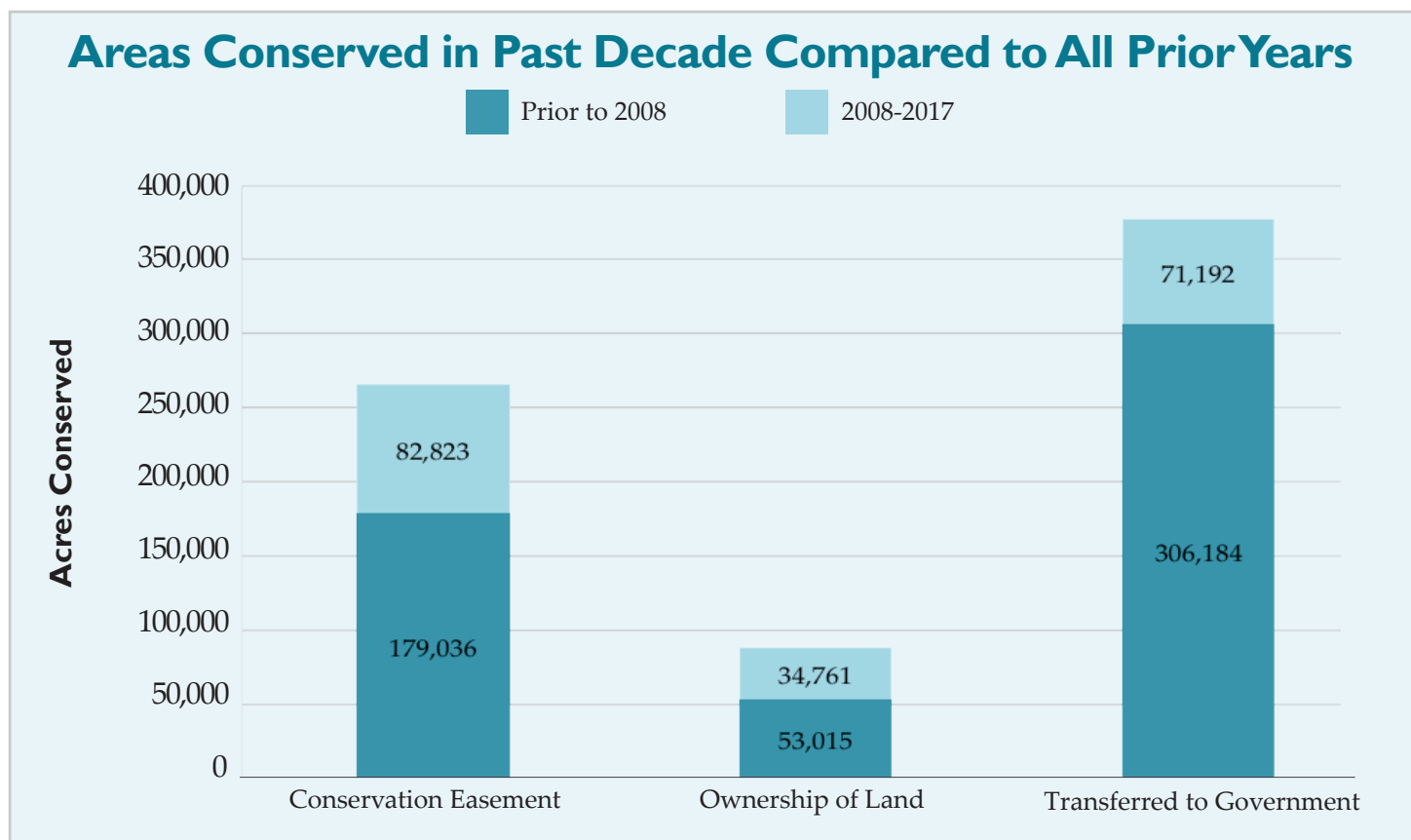
The Pennsylvania Land Trust Association's biennial census found that, in Pennsylvania in the decade between January 2008 and December 2017, land trusts:

- Expanded the lands they have conserved by 36%;
- Conserved 189,000 acres¹ of land (295 square miles);
- On average, conserved 52 acres every day;
- Increased the acreage protected by perpetual conservation easements by 46%;
- Increased the acreage owned by land trusts by 66%;
- Increased by 23% the land transferred to governments for parks, game lands, and other public conservation and recreational purposes.

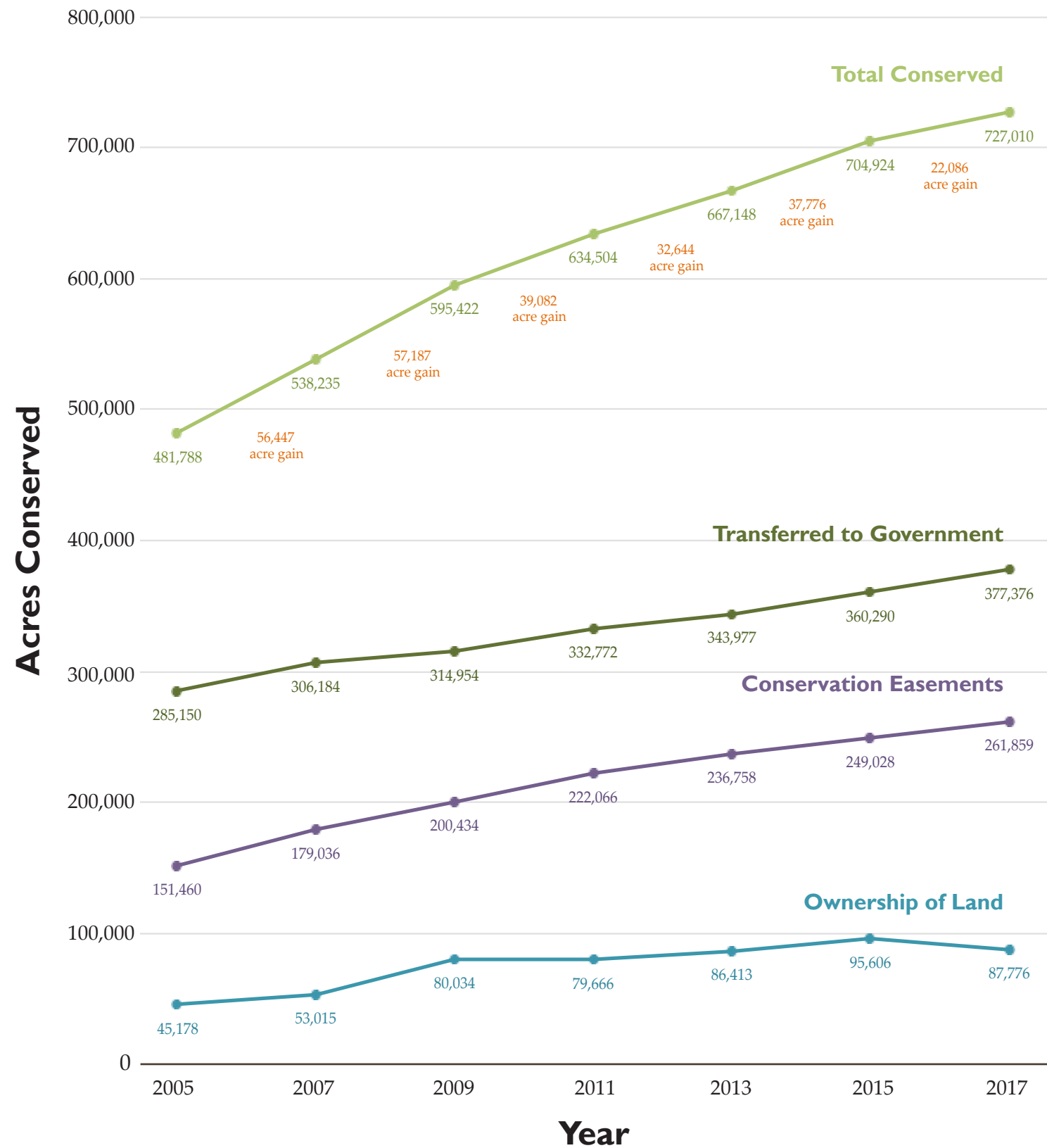
In 2016 and 2017 alone, land trusts protected 22,000 acres (more than 34 square miles).

The census identified 87 private charitable organizations with a continuing commitment to conservation that have completed conservation real estate transactions in Pennsylvania.

¹ An acre is roughly equal to a football field not counting the end zones. There are 640 acres in a square mile.



Total Acres Conserved by land trusts in Pennsylvania



Land Owned

Sixty-five conservation organizations own 87,776 acres in Pennsylvania.*

Rank	Organization	Total
1	Natural Lands	14,046
2	Western Pennsylvania Conservancy	13,745
3	The Nature Conservancy	12,766
4	Earth Conservancy	8,000
5	Lancaster County Conservancy	5,208
6	Brandywine Conservancy and Museum of Art	2,840
7	Wildlands Conservancy	2,595
8	Hawk Mountain Sanctuary Association	2,476
9	Conservation Fund	2,400
10	Pocono Heritage Land Trust	2,068
11	Allegheny Land Trust	1,810
12	North Branch Land Trust	1,597
13	Heritage Conservancy	1,565
14	French & Pickering Creeks Conservation Trust	900
15	Foundation for Sustainable Forests	873
16	Mount Nittany Conservancy	765
17	Pennypack Ecological Restoration Trust	716
18	Allegheny Valley Land Trust	712
19	French Creek Valley Conservancy	693
20	Roaring Run Watershed Association	653
21	Wissahickon Valley Watershed Association	642
22	Somerset County Conservancy	573
23	Lacawac Sanctuary Foundation	550
24	Countryside Conservancy	510
25	Hollow Oak Land Trust	508
26	Audubon Society of Western PA	508
27	Armstrong County Conservancy Charitable Trust	501
28	Southern Alleghenies Conservancy	500
29	The Buck Hill Conservation Foundation	480
30	Wild Waterways Conservancy Inc.	477
31	Westmoreland Conservancy	444
32	Friends of Salt Springs Park, Inc.	437

Rank	Organization	Total
33	Edward L. Rose Conservancy	435
34	Berks Nature	421
35	Open Land Conservancy of Chester County	380
36	Montour Trail Council	356
37	Allegheny Valley Trails Association, Inc.	335
38	Central Pennsylvania Conservancy	334
39	Loyalhanna Watershed Association, Inc.	300
40	Conemaugh Valley Conservancy	297
41	The Land Conservancy for Southern Chester County	273
42	Mokoma Conservancy	243
43	Willistown Conservation Trust	232
44	Allegheny Valley Conservancy	208
45	Lake Erie Region Conservancy, Inc.	194
46	Lackawanna Valley Conservancy	155
47	Chartiers Nature Conservancy	148
48	Audubon Pennsylvania	142
49	Manada Conservancy	130
50	Seneca Highlands Conservancy, Inc.	93
51	London Britain Township Land Trust	80
52	Scott Conservancy	77
53	ClearWater Conservancy	63
54	North American Land Trust	50
55	Pine Creek Valley Watershed Association	48
56	Independence Conservancy	47
57	Fox Chapel Area Land Trust	43
58	Pine Creek Land Conservation Trust	37
59	Merrill Linn Land and Waterways Conservancy	33
60	Appalachian Trail Conservancy	29
61	Evergreen Conservancy	10
62	Mid-Atlantic Karst Conservancy	9
63	Neighborhood Gardens Trust	8
64	Land Conservancy of Adams County	6
65	Shenango Conservancy	2

Land Protected by Conservation Easement

Sixty-four conservation organizations have protected 261,859 acres of land in Pennsylvania through perpetual conservation easements.*

Rank	Organization	Total
1	Western Pennsylvania Conservancy	36,606
2	Brandywine Conservancy and Museum of Art	35,959
3	Lancaster Farmland Trust	29,804
4	The Nature Conservancy	23,708
5	Natural Lands	20,992
6	North Branch Land Trust	11,103
7	Land Conservancy of Adams County	10,718
8	Farm & Natural Lands Trust of York County	10,509
9	Delaware Highlands Conservancy	8,857
10	Berks Nature	8,241
11	Wildlands Conservancy	7,662
12	Heritage Conservancy	7,653
13	French & Pickering Creeks Conservation Trust	6,277
14	Land Trust of Bucks County	5,208
15	Northcentral Pennsylvania Conservancy	5,040
16	Tinicum Conservancy	4,546
17	North American Land Trust	3,397
18	ClearWater Conservancy	3,076
19	Central Pennsylvania Conservancy	2,635
20	Pocono Heritage Land Trust	2,416
21	Willistown Conservation Trust	2,341
22	Manada Conservancy	1,840
23	Merrill Linn Land and Waterways Conservancy	1,384
24	Centre County Farmland Trust	1,297
25	French Creek Valley Conservancy	1,048
26	Countryside Conservancy	920
27	Lancaster County Conservancy	916
28	The Lebanon Valley Conservancy	802
29	Allegheny Valley Conservancy	632
30	Wissahickon Valley Watershed Association	615
31	The Land Conservancy for Southern Chester County	599
32	Lacawac Sanctuary Foundation	550

Rank	Organization	Total
33	The Buck Hill Conservation Foundation	523
34	Edward L. Rose Conservancy	503
35	Rocky Mountain Elk Foundation	453
36	Pine Creek Valley Watershed Association	430
37	Earth Conservancy	300
38	Eden Hill Conservancy	207
39	Allegheny Land Trust	196
40	Lower Merion Conservancy	183
41	The Wallace Trust	180
42	Pennsbury Land Trust	180
43	Audubon Society of Western PA	137
44	Allegheny Valley Trails Association, Inc.	130
45	Hollow Oak Land Trust	130
46	Appalachian Trail Conservancy	126
47	Pennypack Ecological Restoration Trust	112
48	Chestnut Hill Conservancy	100
49	Open Land Conservancy of Chester County	93
50	London Britain Township Land Trust	80
51	Lake Erie Region Conservancy, Inc.	58
52	Independence Conservancy	52
53	Foundation for Sustainable Forests	51
54	Loyalhanna Watershed Association, Inc.	45
55	Evergreen Conservancy	45
56	Lackawanna Valley Conservancy	44
57	Sandy Creek Conservancy	35
58	Fox Chapel Area Land Trust	34
59	West Pikeland Land Trust	25
60	Montour Trail Council	22
61	Schuylkill County Conservancy	14
62	Radnor Conservancy	14
63	Southern Alleghenies Conservancy	5
64	Pine Creek Land Conservation Trust	1

Land Transferred to Government

Thirty-two conservation organizations have transferred 377,376 acres to governmental entities* (e.g., DCNR, Pennsylvania Game Commission, counties, and municipalities).

Rank	Organization	Total
1	Western Pennsylvania Conservancy	198,382
2	The Conservation Fund	94,223
3	Wildlands Conservancy	37,020
4	Rocky Mountain Elk Foundation	9,313
5	Earth Conservancy	8,000
6	Northcentral Pennsylvania Conservancy	6,460
7	The Nature Conservancy	4,828
8	The Trust for Public Land	3,709
9	North Branch Land Trust	3,401
10	Seneca Highlands Conservancy, Inc.	3,000
11	Central Pennsylvania Conservancy	1,529
12	French & Pickering Creeks Conservation Trust	1,199
13	Natural Lands	1,191
14	Delaware Highlands Conservancy	1,191
15	ClearWater Conservancy	857
16	Berks Nature	714
17	Armstrong County Conservancy Charitable Trust	700

Rank	Organization	Total
18	Lancaster County Conservancy	432
19	Farm & Natural Lands Trust of York County	387
20	Westmoreland Land Trust	270
21	French Creek Valley Conservancy	100
22	Montour Trail Council	96
23	Allegheny Land Trust	88
24	Lake Erie Region Conservancy, Inc.	83
25	Land Conservancy of Adams County	40
26	Merrill Linn Land and Waterways Conservancy	36
27	Countryside Conservancy	34
28	The Wallace Trust	30
29	Lackawanna Valley Conservancy	25
30	Wissahickon Valley Watershed Association	25
31	Allegheny Valley Land Trust	12
32	Manada Conservancy	<1

Number of Perpetual Trail Easements

Fifteen land trusts hold 185 trail easements in PA.*

Rank	Organization	Total
1	Natural Lands	106
2	Montour Trail Council	28
3	Wissahickon Valley Watershed Association	15
4	Countryside Conservancy	9
5	French & Pickering Creeks Conservation Trust	7
6	Willistown Conservation Trust	6
7	North American Land Trust	3
8	Appalachian Trail Conservancy	2
9	Brandywine Conservancy and Museum of Art	2
10	Westmoreland Conservancy	2

Rank	Organization	Total
11	Earth Conservancy	1
12	Hollow Oak Land Trust	1
13	Lancaster County Conservancy	1
14	The Land Conservancy for Southern Chester County	1
15	Tinicum Conservancy	1

The census and this report were made possible, in part, by financial support from the Community Conservation Partnerships Program, Environmental Stewardship Fund, under the administration of the Pennsylvania Department of Conservation and Natural Resources, Bureau of Recreation and Conservation.

Number of Perpetual Conservation Easements

Sixty-two organizations hold 3,331 perpetual conservation easements in Pennsylvania.*

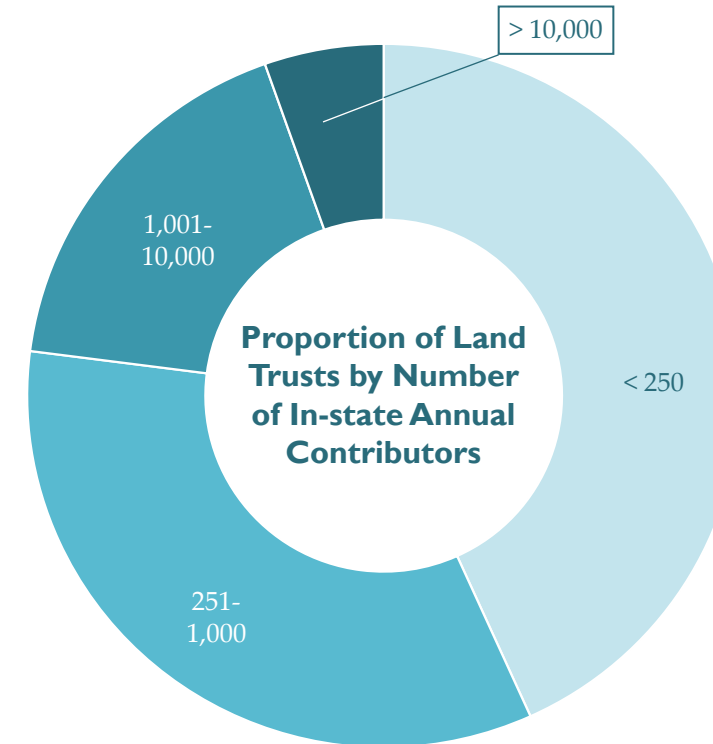
Rank	Organization	Total
1	Lancaster Farmland Trust	488
2	Brandywine Conservancy and Museum of Art	457
3	Natural Lands	352
4	Heritage Conservancy	212
5	French & Pickering Creeks Conservation Trust	173
6	Land Conservancy of Adams County	156
7	Western Pennsylvania Conservancy	154
8	Farm & Natural Lands Trust of York County	128
9	Berks Nature	125
10	Land Trust of Bucks County	113
11	Tinicum Conservancy	113
12	Willistown Conservation Trust	72
13	Wildlands Conservancy	71
14	North American Land Trust	66
15	Delaware Highlands Conservancy	64
16	North Branch Land Trust	57
17	Northcentral Pennsylvania Conservancy	47
18	Chestnut Hill Conservancy	38
19	The Nature Conservancy	32
20	Lancaster County Conservancy	28
21	Montour Trail Council	28
22	Fox Chapel Area Land Trust	27
23	The Land Conservancy for Southern Chester County	25
24	Central Pennsylvania Conservancy	24
25	Wissahickon Valley Watershed Association	24
26	Manada Conservancy	23
27	The Wallace Trust	22
28	Countryside Conservancy	21
29	Lower Merion Conservancy	20
30	ClearWater Conservancy	19
31	Merrill Linn Land and Waterways Conservancy	16

Rank	Organization	Total
32	Centre County Farmland Trust	14
33	French Creek Valley Conservancy	13
34	Open Land Conservancy of Chester County	10
35	Pennsbury Land Trust	10
36	Allegheny Land Trust	9
37	The Lebanon Valley Conservancy	9
38	Pennypack Ecological Restoration Trust	8
39	Edward L. Rose Conservancy	7
40	Allegheny Valley Conservancy	6
41	Appalachian Trail Conservancy	6
42	Pine Creek Valley Watershed Association	5
43	Pocono Heritage Land Trust	5
44	Lake Erie Region Conservancy, Inc.	4
45	London Britain Township Land Trust	4
46	Independence Conservancy	3
47	Radnor Conservancy	3
48	Audubon Society of Western PA	2
49	Eden Hill Conservancy	2
50	Hollow Oak Land Trust	2
51	Rocky Mountain Elk Foundation	2
52	West Pikeland Land Trust	2
53	Earth Conservancy	1
54	Evergreen Conservancy	1
55	Foundation for Sustainable Forests	1
56	Lacawac Sanctuary Foundation	1
57	Lackawanna Valley Conservancy	1
58	Loyalhanna Watershed Association, Inc.	1
59	Pine Creek Land Conservation Trust	1
60	Sandy Creek Conservancy	1
61	Southern Alleghenies Conservancy	1
62	The Buck Hill Conservation Foundation	1

*Numbers accurate as of 12/31/2017

Land Trust Support and Staffing

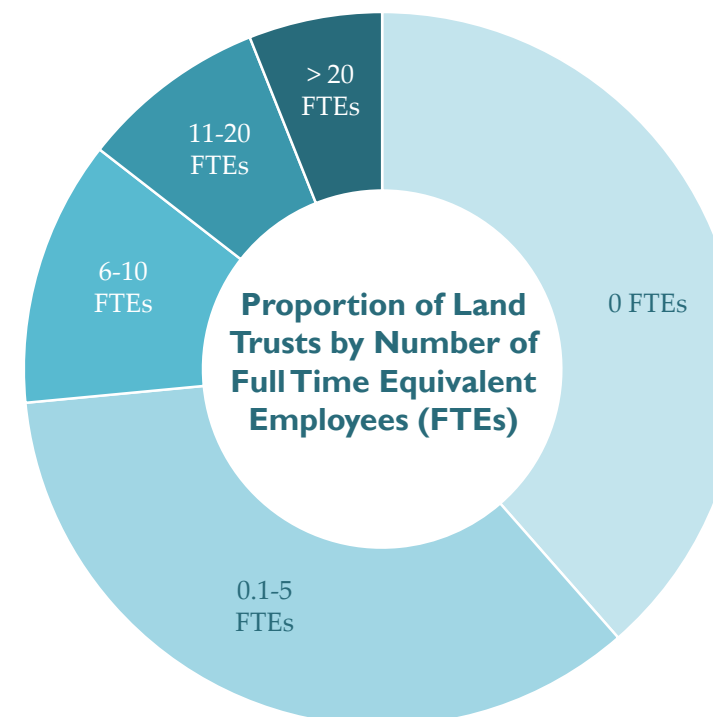
Pennsylvania Land Trust Contributors



Over 123,000 Pennsylvanians contribute financially to land trusts in the state

- < 250 contributors, 32 land trusts (44%)
- 251-1,000 contributors, 25 land trusts (34%)
- 1,001-10,000 contributors, 13 land trusts (18%)
- > 10,000 contributors, 3 land trusts (4%)

Pennsylvania Employment by Land Trusts



Land trusts directly employ the equivalent of 598 people in full-time jobs in Pennsylvania

- 0 FTEs, 33 land trusts (39%)
- 0.1-5 FTEs, 29 land trusts (35%)
- 6-10 FTEs, 10 land trusts (12%)
- 11-20 FTEs, 7 land trusts (8%)
- > 20 FTEs, 5 land trusts (6%)



PENNSYLVANIA LAND TRUST ASSOCIATION

119 Pine Street, 1st floor
Harrisburg, PA 17101
ConserveLand.org
717.230.8560 | info@conserveLand.org

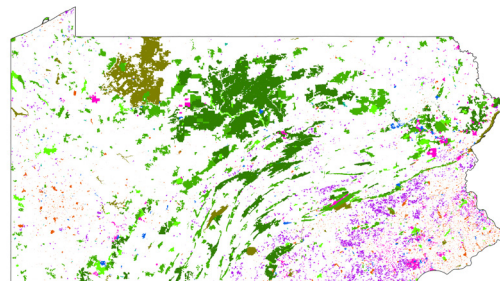


Follow us on
Facebook, Twitter, and Instagram

Enclosed is a report of the findings of the
2017 Pennsylvania Land Trust Census

**26% of all the
conservation
accomplished
by land trusts
occurred in the
past decade**

PA Conserved Land



See where conservation is happening
in the mapping section of

ConservationTools.org