

Pennsylvania Land Conservation Conference

March 16 - 18, 2022 | Gettysburg



\$5,000 | EASTERN HEMLOCK – premiere sponsor!

- All Mountain Laurel benefits, *plus*
- Total of FOUR (4) basic conference registrations
- 1/2 page ad in conference program
- Introduce keynote speaker
- Exclusive opportunity to present remarks at opening plenary
- Lead sponsor representative and guest invited to join the speaker's dinner table



\$3,000 | MOUNTAIN LAUREL

- All Brook Trout benefits, *plus*
- Total of TWO (2) basic conference registrations
- 1/2 page ad in conference program
- List of registrants after conference
- 30 second promotional video of your choice (must be provided by you) to air during conference



\$2,000 | BROOK TROUT

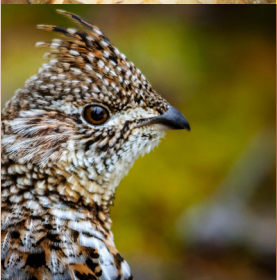
- All Hellbender benefits, *plus*
- 1/2 page ad in conference program
- List of registrants after conference



\$1,250 | HELLBENDER

- All Ruffed Grouse benefits *plus*
- One basic event conference registration
- Pick the session of your choice to sponsor

Image credit: Brian Gratwicke



\$500 | RUFFED GROUSE

- Logo added to WeConservePA.org until 2022
- Logo included in virtual and printed conference marketing materials
- 1/4 page ad in conference program

All sponsorships include an exhibition table at the Gettysburg Wyndham

Fireflies:

1/2 page ad: \$250 and business card size ad: \$100 in official conference program - 4-color printed and online versions. You must provide your own ad! Ad deadline is February 10, 2022.

Pennsylvania Land Conservation Conference

March 16 - 18, 2022 | Gettysburg



AD SPECS

BUSINESS CARD

Finished size: 3.5" x 2" (1050 x 600)

Interior dimensions: 3.25" x 1.75"

QUARTER PAGE

Finished size: 3.75" x 5" (1125 x 1500)

Interior dimensions: 3.5" x 4.75"

HALF PAGE

Finished size: 8" x 5" (2400 x 1800)

Interior dimensions 7.75" x 4.75"

You must provide your own ad. Ad deadline is **February 10, 2022**.

Please send PDF full color to spainter@weconservepa.org

To learn more about becoming a sponsor, please contact Sara Painter, director of outreach and development at (484) 787-6938. A portion of your sponsorship is tax-deductible and our EIN is 23-2789029.

Please remit sponsorship contribution to:

WeConservePA
610 N. 3rd Street, #301
Harrisburg, PA 17101

Or safely online at: <https://weconservepa.org/conference/sponsorship/>

Exhibitor space is limited. Priority will be reserved for sponsors who wish to host an exhibitor table. If available, exhibition tables will be \$100 each starting on February 12, 2022. You may email Sara Painter to be added to the waiting list.