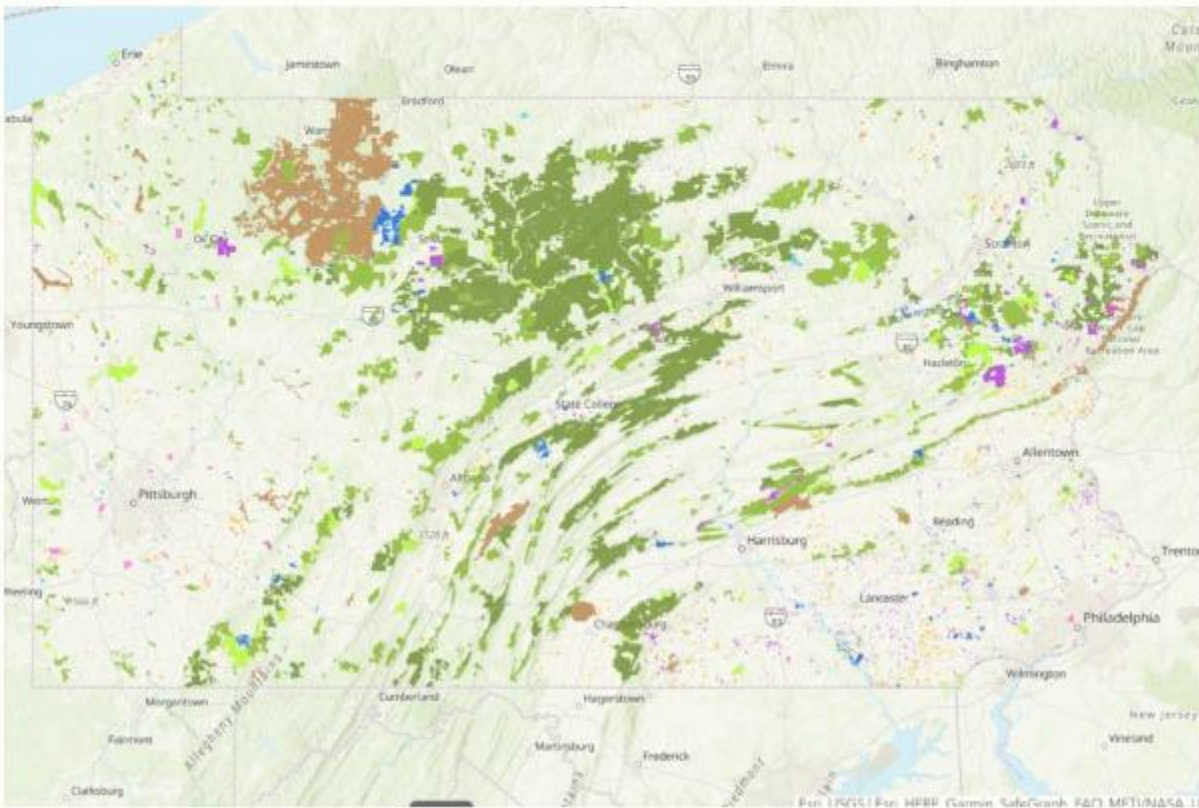


# Conserved Land Web Application Tutorial



# Conserved Land Database

<https://weconservepa.org/gis/>



## PA's Official Spatial Database of Conserved Land

WeConservePA compiles and maintains Pennsylvania's official spatial database of conserved land, including privately conserved land and properties and those conserved by federal, state, county, and local governments.

**LAUNCH WEB MAP**

# Pennsylvania Land Conservation

This map displaying conserved land in Pennsylvania includes public land owned by the federal government, state government, and local county and municipal governments; as well as privately conserved land owned by land trusts; and lastly conservation easements, which are held by both governments and land trusts.

Data are updated quarterly via the Pennsylvania Spatial Data Access (PASDA).

Attribute fields include site name, brief categorical description, owner or easement holder name, acres, and a link to the site's or owner's website, if available.

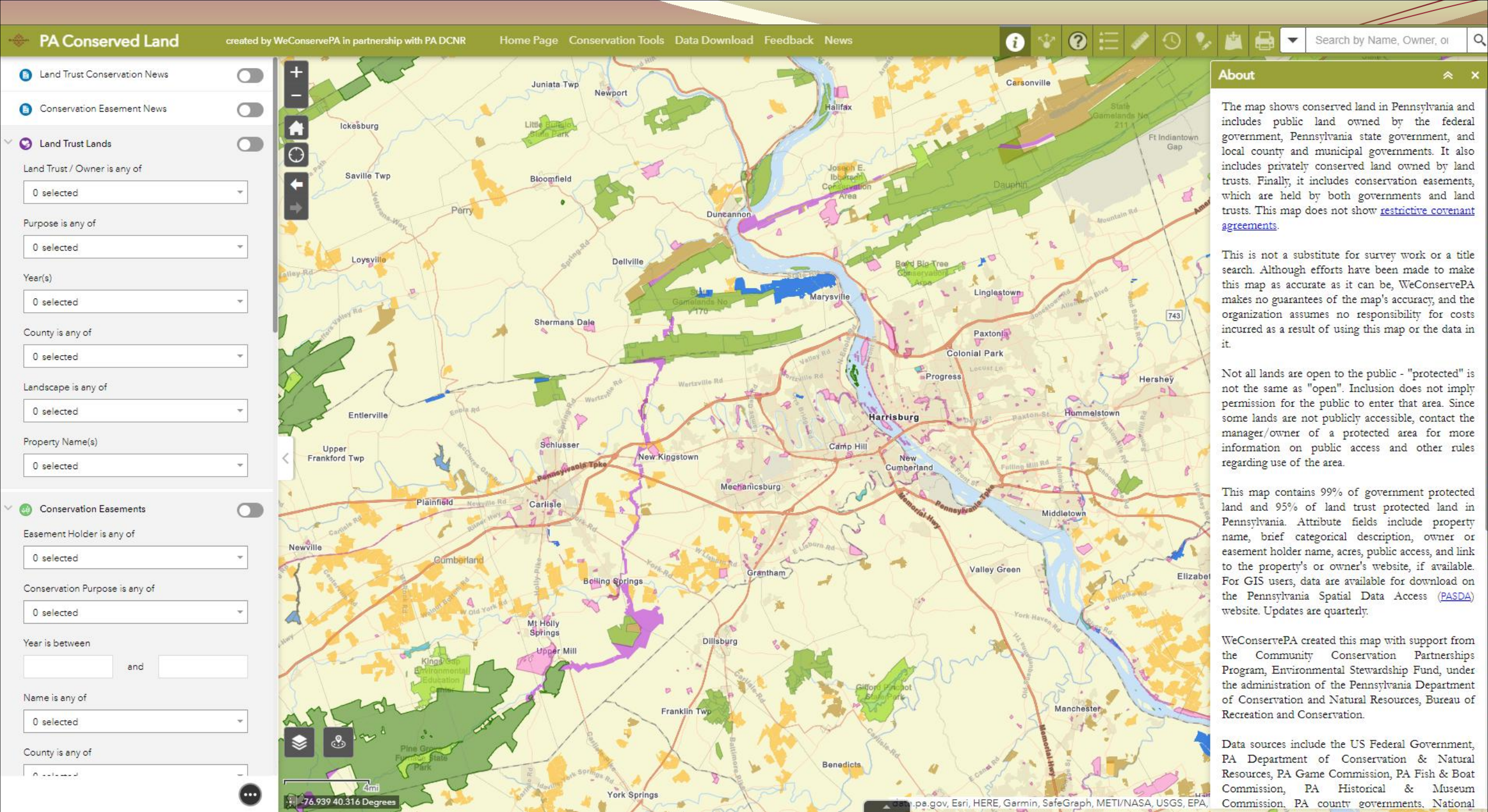
This map was assembled and is maintained by WeConservePA under contract for the PA Department of Conservation and Natural Resources.

For more information, visit our [home page](#) and [Conservation Tools](#).

## Resources

- [Acquisition of Land & Easements](#)
- [Stewardship of Fee-Owned Lands](#)
- [Stewardship of Eased Lands](#)
- [Recreation, Park and Open Space Plans](#)
- [Farmland Preservation](#)





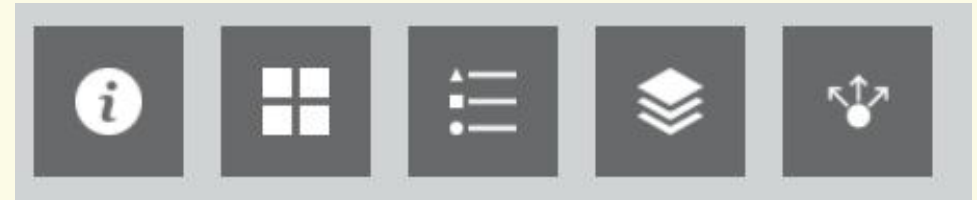




# Basic Controls



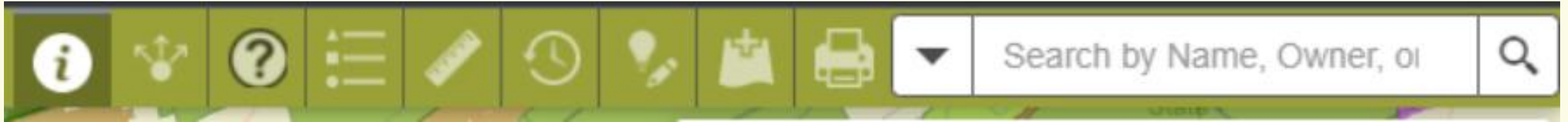
- Zoom In
  - Increase map scale
- Zoom Out
  - Decrease map scale
- Default Extent
  - Original map view
- Previous Extent
  - Backwards in map extents
- Next Extent
  - Forward in map extents



- About
  - More information about WeConservePA
- Basemap Gallery
  - Change background map layer
- Legend
  - Symbolology of map layers
- Layer List
  - Turn on or off map layers
- Share
  - Email, Facebook, Twitter, Google+

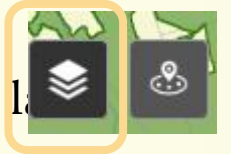


# Interact with the Map



1                      2                      3                      4                      5                      6                      7                      8                      9                      10

1. About the map
2. Share a link to this app or Embed this app in a website
3. How to: a) Use the Timeline Tool, b) Improve the Map, c) Print the Current View
4. Map Legend
5. Measure area, length, or get coordinates
6. Select to turn on timeline option. A pre-requisite is to turn on the PACL\_Timeline Layer under the layers list
7. Improve the Map. A pre-requisite is to turn on the Editable layers (Add New Conserved Land or Change Existing Feature)
8. Add Temporary Data to the map. Sources include ArcGIS Online, a REST service URL or upload a file
9. Print current map view
10. Search by location, Municipality, Preserve Name, Local Park Name.



# Interact with Layers and find properties near you

## 11. Layer List



### Layer List

- ▶ ☐ Add New Conserved Land
- ▶ ☐ Change Existing Feature
- ▶ ☒ Municipalities
- ▶ ☒ Federal
- ▶ ☒ Label\_State
- ▶ ☒ State
- ▶ ☒ Land Trust Lands
- ▶ ☒ Local Parks & Open Space
- ▶ ☒ Conservation Easements

- a) Turn layer on or off
- b) Set Transparency
- c) Set Visibility range
- d) Disable pop-up
- e) View in Attribute Table

## 12. Near Me

### Near Me

Search for an address or locate on map

▼

Find address or place

🔍

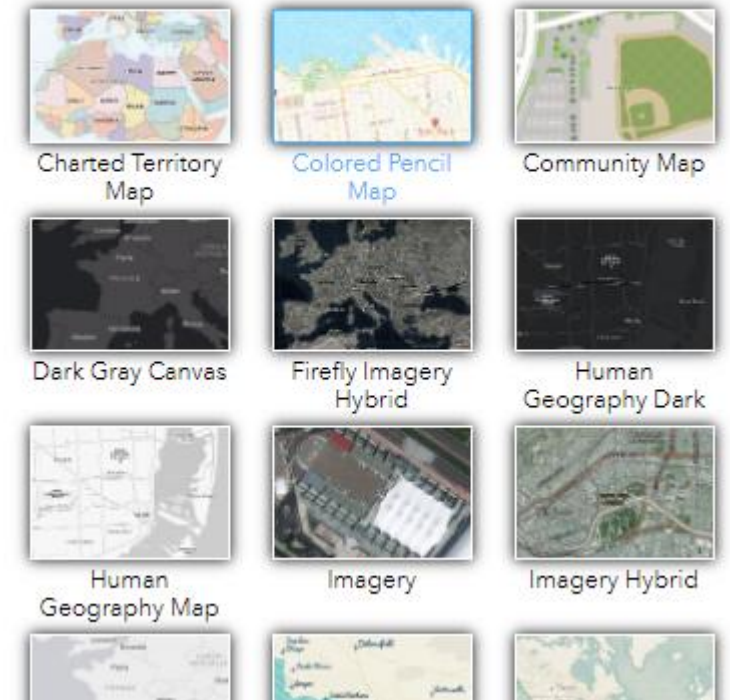
Show results within 5 Miles

0

15

## 13. Change Basemap

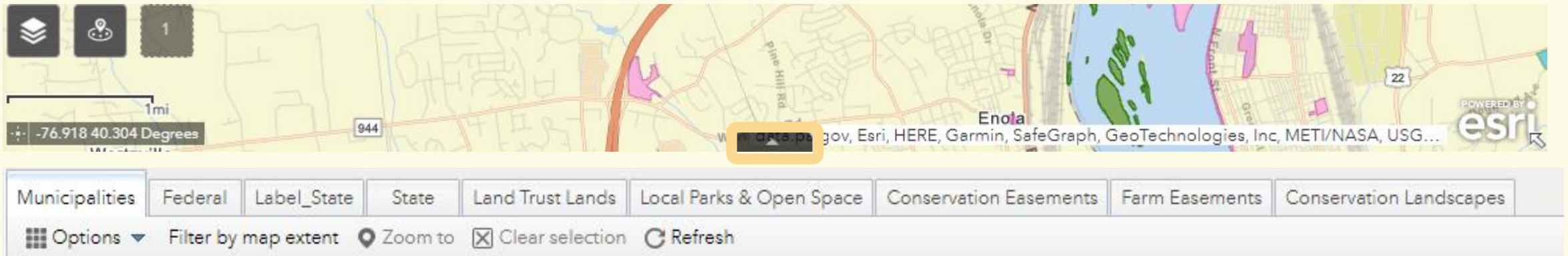
### Basemap Gallery





# View and interact with the Attribute Table

1. Open the table by selecting the triangle at the bottom of the map



2. Switch table tabs to switch between layers
3. Turn on by selecting Filter by map extent to only show properties within your viewing window

# View and interact with the Attribute Table

4. Select feature by clicking on the far left grey box - double click to go to selected feature

	Name	Owner	Website	Property Link	Conservation News	Year	Acres
	Cove Mountain Preserve	The Nature Conservancy	<a href="https://www.nature.org/our">https://www.nature.org/our</a>	<a href="https://www.nature.org/en-us/get-involved/how-to-help/places-we-protect/cove-mountain-preserve-the-nature-conservancy/">https://www.nature.org/en-us/get-involved/how-to-help/places-we-protect/cove-mountain-preserve-the-nature-conservancy/</a>	Nature Conservancy Acquires Kittatinny Ridge Property	2017	364.69
	Cove Mountain Preserve	The Nature Conservancy	<a href="https://www.nature.org/our">https://www.nature.org/our</a>	<a href="https://www.nature.org/en-us/get-involved/how-to-help/places-we-protect/cove-mountain-preserve-the-nature-conservancy/?src=e.ch_pa.eq.x.gpn.0321.r">https://www.nature.org/en-us/get-involved/how-to-help/places-we-protect/cove-mountain-preserve-the-nature-conservancy/?src=e.ch_pa.eq.x.gpn.0321.r</a>	The Nature Conservancy Announces Closing of Significant Land Deal to Expand Cove Mountain Preserve	2021	118.70

5. Table Options

- a) Show selected records - removes non-selected records from the table
- b) Filter - User-defined expression
- c) Show/Hide columns
- d) Export selected to CSV

6. Sort columns A-Z, Z-A, Ascending, or Descending by Left-clicking header  
Statistics are for all features in table. Set filters to reflect your features of interest.

Options ▾ Filter by map e

☒ Show selected records  
☐ Show related records  
Filter  
☒ Show/Hide columns  
☐ Export selected to CSV

Statistics

Field : Acres

Number of values	17
Sum of values	1,007.27
Minimum	0.32
Maximum	381.81
Average	59.25
Standard deviation	106.12

Acres

15.21

0.15

Sort ascending  
Sort descending  
Statistics



PA Conserved Land Home Page

Land Trust Conservation News ☐

Conservation Easement News ☐

Land Trust Lands ☐

Land Trust / Owner is any of

0 selected

Purpose is any of

0 selected

Year(s)

0 selected

County is any of

0 selected

Landscape is any of

0 selected

Property Name(s)

0 selected

Conservation Easements ☐

Easement Holder is any of

0 selected

Conservation Purpose is any of

0 selected

Year is between

and

Name is any of

0 selected

...

# Filter the map layers

1. Land Trust Land & Conservation Easement has associated Conservation News Article
2. Acquisition or easement funded by selected grant program(s)
3. Feature layer options:
  - a) Agency, Owner or easement holder
  - b) Purpose, description, or park type
  - c) Year(s) established or acquired
  - d) County/counties present
  - e) DCNR Conservation Landscape designation
  - f) Property names
4. Filters relate to one another. When you set the agency/owner/holder, all other filters in that set will be abridged. For example, setting the Land Trust Land owner to Allegheny Land Trust will then only give property names for that selection.
5. Turn on filter by selecting the button. It will turn green when activate.
6. The attribute table will reflect these active filters. Once filters are set, you may export the table to a CSV file.
7. Turn off filter by selecting the button again.
8. Filters are available for all conservation feature layers.

OFF



ON



# Download the Data



1. WeCoservePA Logo  
<http://www.weconservepa.org/>
2. WeConservePA GIS Page  
<https://weconservepa.maps.arcgis.com/home/index.html>
3. Conservation Tools  
<https://conservationtools.org/>
4. **Data Download**  
<https://www.pasda.psu.edu/uci/SearchResults.aspx?originator=WeConservePA>
5. Feedback  
[Google Forms](#) - Issues, suggestions, improvements, rating
6. News  
<https://weconservepa.org/blog/category/conservation-projects/>



# Questions?



**Irina Beal**

GIS Analyst

717.220.3272

[ibeal@WeConservePA.org](mailto:ibeal@WeConservePA.org)

610 N. 3rd St, Suite 301  
Harrisburg, PA 17101

[WeConservePA.org](http://WeConservePA.org)

<https://weconservepa.maps.arcgis.com/home/index.html>