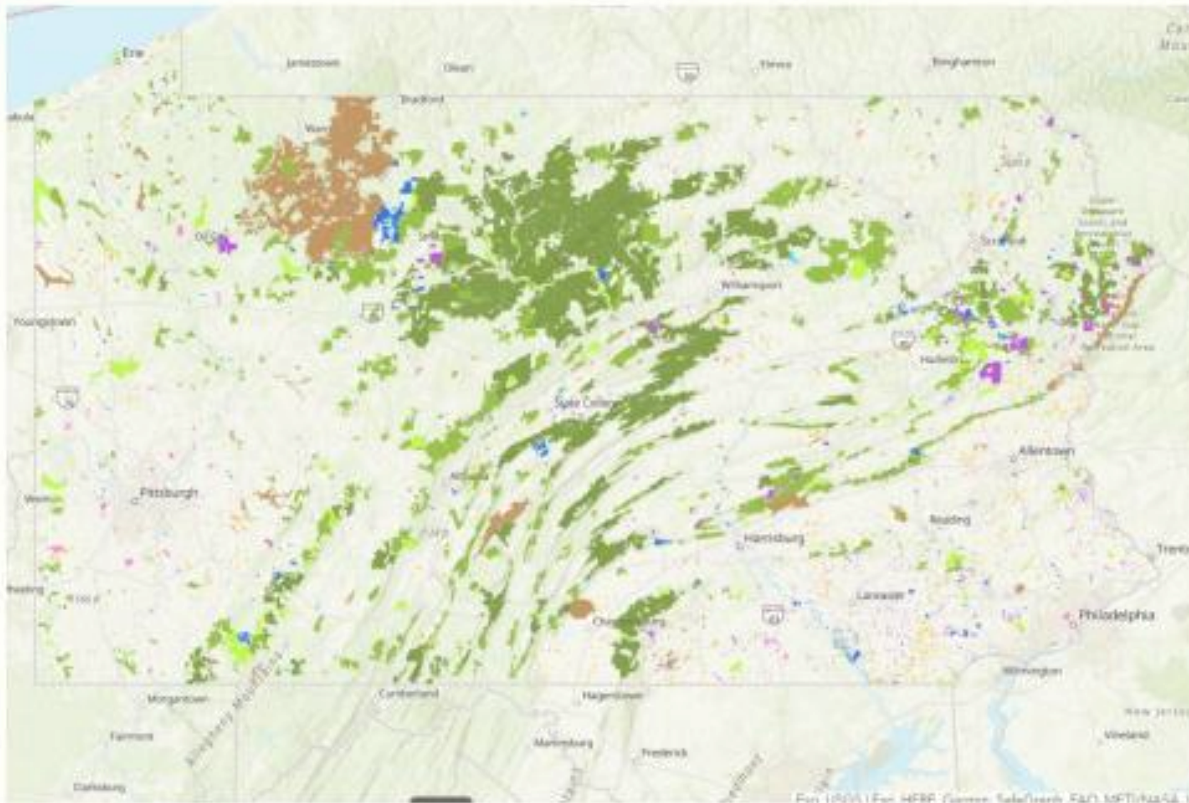


Conserved Land Web Application Tutorial



Conserved Land Database



PA's Official Spatial Database of Conserved Land

WeConservePA compiles and maintains Pennsylvania's official spatial database of conserved land, including privately conserved land and properties and those conserved by federal, state, county, and local governments.

[LAUNCH WEB MAP](#)

[TUTORIAL](#)

Pennsylvania Land Conservation

This map displaying conserved land in Pennsylvania includes public land owned by the federal government, state government, and local county and municipal governments; as well as privately conserved land owned by land trusts; and lastly conservation easements, which are held by both governments and land trusts.

Data are updated quarterly via the Pennsylvania Spatial Data Access (PASDA).

Attribute fields include site name, brief categorical description, owner or easement holder name, acres, and a link to the site's or owner's website, if available.

This map was assembled and is maintained by WeConservePA under contract for the PA Department of Conservation and Natural Resources.

For more information, visit our [home page](#) and [Conservation Tools](#).

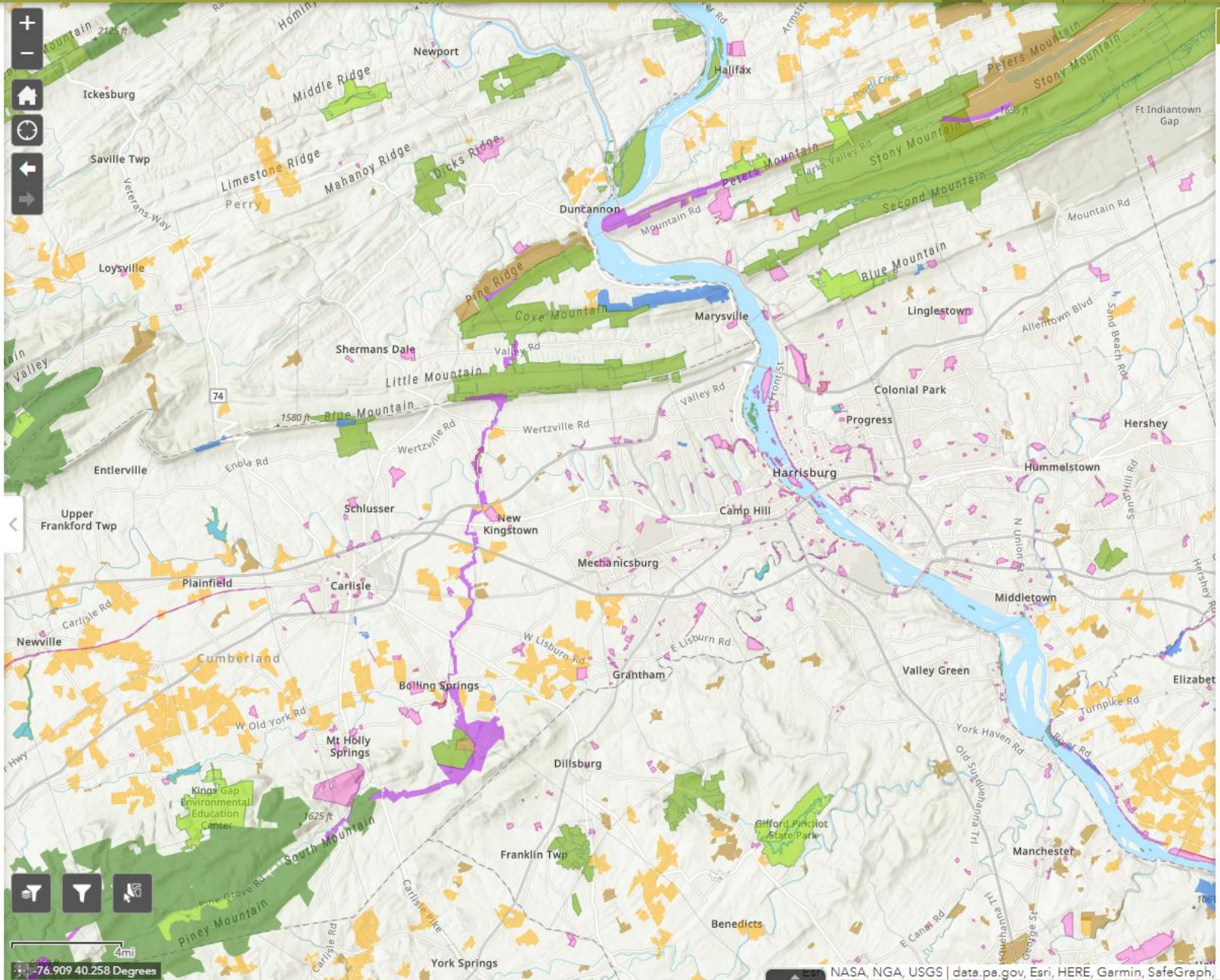
Resources

- [Acquisition of Land & Easements](#)
- [Stewardship of Fee-Owned Lands](#)
- [Stewardship of Eased Lands](#)
- [Recreation, Park and Open Space Plans](#)
- [Farmland Preservation](#)

Search by property name, owner or easement holder, location, county, landscape, or grant funding type.

Name, Owner / Holder, Typ

Show results within 10 Miles



About

The map shows conserved land in Pennsylvania and includes public land owned by the federal government, Pennsylvania state government, and local county and municipal governments. It also includes privately conserved land owned by land trusts. Finally, it includes conservation easements, which are held by both governments and land trusts. This map does not show restrictive covenant agreements.

This is not a substitute for survey work or a title search. Although efforts have been made to make this map as accurate as it can be, WeConservePA makes no guarantees of the map's accuracy, and the organization assumes no responsibility for costs incurred as a result of using this map or the data in it.

Not all lands are open to the public - "protected" is not the same as "open". Inclusion does not imply permission for the public to enter that area. Since some lands are not publicly accessible, contact the manager/owner of a protected area for more information on public access and other rules regarding use of the area.

This map contains 99% of government protected land and 95% of land trust protected land in Pennsylvania. Attribute fields include property name, brief categorical description, owner or easement holder name, acres, public access, and link to the property's or owner's website, if available. For GIS users, data are available for download on the Pennsylvania Spatial Data Access (PASDA) website. Updates are quarterly.

WeConservePA created this map with support from the Community Conservation Partnerships Program, Environmental Stewardship Fund, under the administration of the Pennsylvania Department of Conservation and Natural Resources, Bureau of Recreation and Conservation.

Data sources include the US Federal Government, PA Department of Conservation & Natural Resources, PA Game Commission, PA Fish & Boat Commission, PA Historical & Museum Commission, PA county governments, National

Search by property name, owner or easement holder, location, county, landscape, or grant funding type. Name, Owner / Holder, Typ [icon] [icon] Show results within 10 Miles 0 50



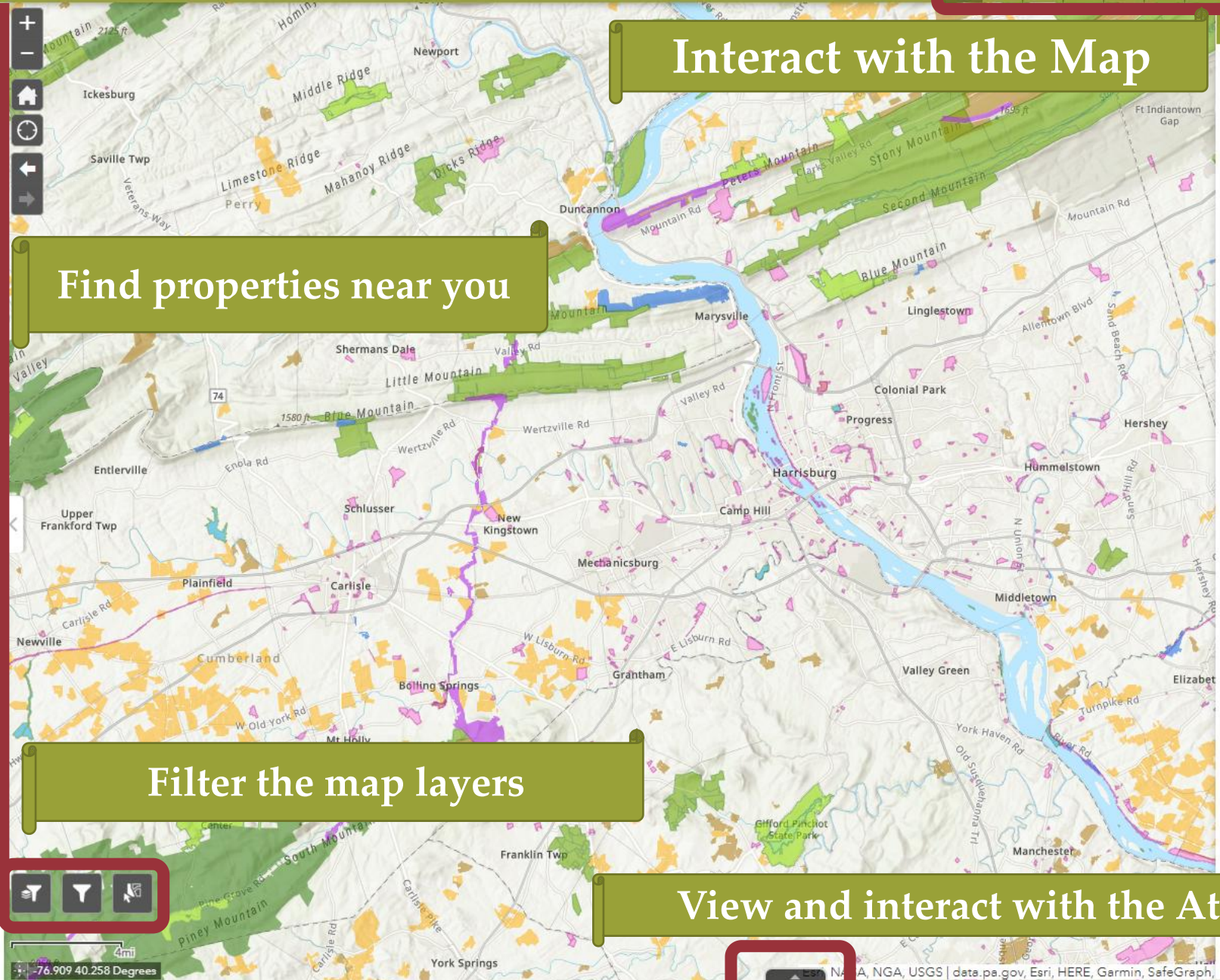
Interact with the Map

Find properties near you



Filter the map layers

View and interact with the Attribute Table



About

The map shows conserved land in Pennsylvania and includes public land owned by the federal government, Pennsylvania state government, and local county and municipal governments. It also includes privately conserved land owned by land trusts. Finally, it includes conservation easements, which are held by both governments and land trusts. This map does not show [restrictive covenant agreements](#).

This is not a substitute for survey work or a title search. Although efforts have been made to make this map as accurate as it can be, WeConservePA makes no guarantees of the map's accuracy, and the organization assumes no responsibility for costs incurred as a result of using this map or the data in it.

Not all lands are open to the public - "protected" is not the same as "open". Inclusion does not imply permission for the public to enter that area. Since some lands are not publicly accessible, contact the manager/owner of a protected area for more information on public access and other rules regarding use of the area.

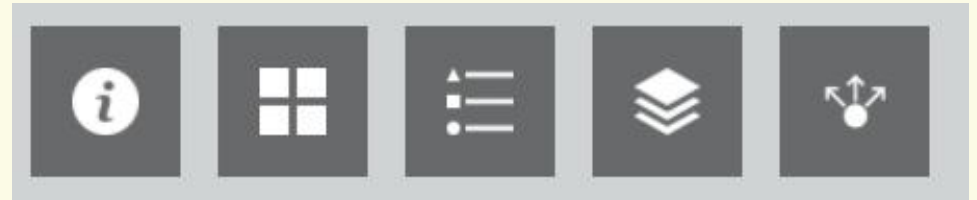
This map contains 99% of government protected land and 95% of land trust protected land in Pennsylvania. Attribute fields include property name, brief categorical description, owner or easement holder name, acres, public access, and link to the property's or owner's website, if available. For GIS users, data are available for download on the Pennsylvania Spatial Data Access ([PASDA](#)) website. Updates are quarterly.

WeConservePA created this map with support from the Community Conservation Partnerships Program, Environmental Stewardship Fund, under the administration of the Pennsylvania Department of Conservation and Natural Resources, Bureau of Recreation and Conservation.

Basic Controls



- Zoom In
 - Increase map scale
- Zoom Out
 - Decrease map scale
- Default Extent
 - Original map view
- Previous Extent
 - Backwards in map extents
- Next Extent
 - Forward in map extents



- About
 - More information about WeConservePA
- Basemap Gallery
 - Change background map layer
- Legend
 - Symbology of map layers
- Layer List
 - Turn on or off map layers
- Share
 - Email, Facebook, Twitter, Google+

Interact with the Map



1. About the map
2. How to: a) Use the Timeline Tool, b) Improve the Map, c) Print the Current View
3. Map Legend
4. Turn layers on or off
5. Measure area, length, or get coordinates
6. Select to turn on timeline option. A pre-requisite is to turn on the PACL_Timeline Layer under the layer list
7. Improve the Map. A pre-requisite is to turn on the Editable layers (Add New Conserved Land or Change Existing Feature)
8. Add Temporary Data to the map. Sources include ArcGIS Online, a REST service URL or upload a file
9. Print current map view
10. Share a link to this app or Embed this app in a website
11. Search by location, Municipality, Preserve Name, Local Park Name.

Interact with Layers and find properties near you

11. Layer List



Layer List

- ▶ Add New Conserved Land
- ▶ Change Existing Feature
- ▶ Municipalities
- ▶ Federal
- ▶ Label_State
- ▶ State
- ▶ Land Trust Lands
- ▶ Local Parks & Open Space
- ▶ Conservation Easements

- Turn layer on or off
- Set Transparency
- Set Visibility range
- Disable pop-up
- View in Attribute Table

12. Near Me

Near Me

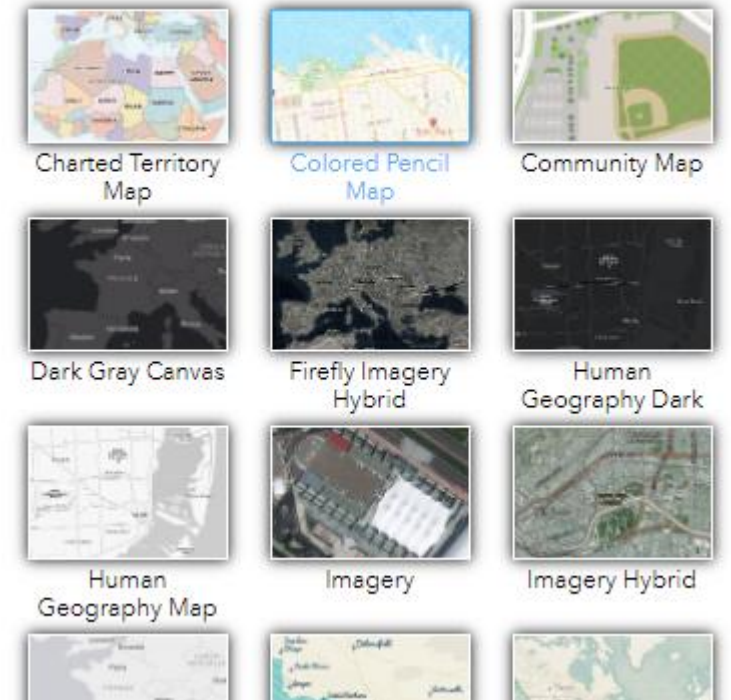
Search for an address or locate on map

Show results within 5 Miles

0 ————— 15

13. Change Basemap

Basemap Gallery



Find properties near you

Search by property name, owner or easement holder, location, county, landscape, or grant funding type.

▼ 129-293 Hershey Rd, Elizal ✕ 🔍 

Show results within 10 Miles

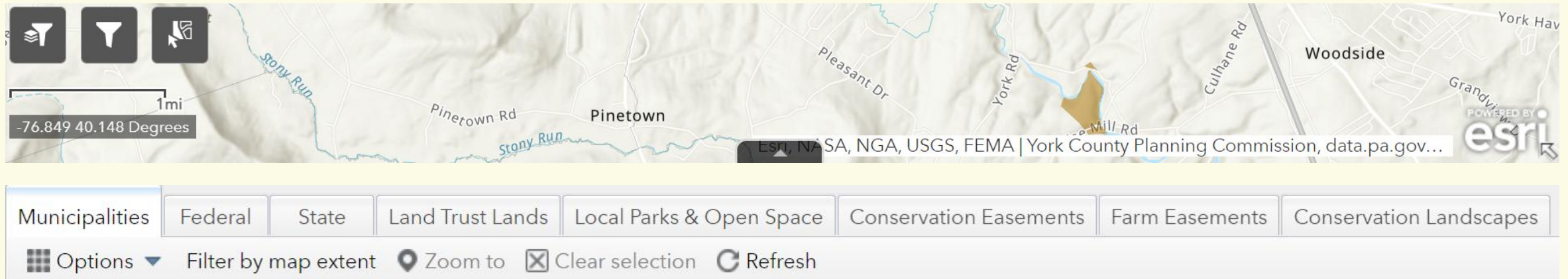
0  50

State	(12)	>
Land Trust Lands	(10)	>
Local Parks & Open Space	(80)	>
Conservation Easements	(10)	>
Farm Easements	(315)	>

< Land Trust Lands	(10)
Donegal Highlands Nature Preserve	0.83 mi
Donegal Highlands Nature Preserve	0.96 mi
Conewago Creek Nature Preserve	1.43 mi
Bellaire Woods Nature Preserve	3.45 mi
Conoy Wetlands Nature Preserve	7.78 mi
Iron Mine Run	7.83 mi
Royalton	7.94 mi

View and interact with the Attribute Table

1. Open the table by selecting the triangle at the bottom of the map



2. Switch table tabs to switch between layers
3. Turn on by selecting Filter by map extent to only show properties within your viewing window

View and interact with the Attribute Table

4. Select feature by clicking on the far left grey box - double click to go to selected feature

Name	Owner	Website	Property Link	Conservation News	Year	Acres
Cove Mountain Preserve	The Nature Conservancy	https://www.nature.org/ourir	https://www.nature.org/en-us/get-involved/how-to-help/places-we-protect/cove-mountain-preserve-the-nature-conservancy/	Nature Conservancy Acquires Kittatinny Ridge Property	2017	364.69
Cove Mountain Preserve	The Nature Conservancy	https://www.nature.org/ourir	https://www.nature.org/en-us/get-involved/how-to-help/places-we-protect/cove-mountain-preserve-the-nature-conservancy/?src=e.ch_pa.eq.x.gpn.0321.r	The Nature Conservancy Announces Closing of Significant Land Deal to Expand Cove Mountain Preserve	2021	118.70

5. Table Options

- Show selected records - removes non-selected records from the table
- Filter - User-defined expression
- Show/Hide columns
- Export selected to CSV

6. Sort columns A-Z, Z-A, Ascending, or Descending by Left-clicking header
Statistics are for all features in table. Set filters to reflect your features of interest.

Options Filter by map e

- Show selected records
- Show related records
- Filter
- Show/Hide columns
- Export selected to CSV

Statistics

Field : Acres

Number of values	17
Sum of values	1,007.27
Minimum	0.32
Maximum	381.81
Average	59.25
Standard deviation	106.12

Acres

- Sort ascending
- Sort descending
- Statistics

Group Filter

Filter: County | Landscape | Name ⌵ □ ✕

All filter expressions will be cumulative ⚙️

Filter by

County ⌵

EQUALS ⌵

- empty - ⌵

Add Criteria

Apply **Reset**

Filter all layers by:

- County
- Landscape
- Owner or Easement Holder Name
- Property Name

Save current settings

Save

Save the current filter settings to a file. Upload the file below to retrieve these settings later.

Upload a settings file

Choose File No file chosen

Filter options

Persist filters after the widget is closed

Refresh data

Refresh 🔄

Pulls data changes to refresh the list of values in the filter drop-down.



Individual Filters

Filter: News | Type | Purpose | Date | Grants

Land Trust News

Conservation Easement News

Federal

Purpose(s)
0 selected

Year Established
0 selected

Grant Funding
0 selected

State

Purpose(s)
0 selected

Land Trust Land & Conservation Easements have an associated Conservation News Article
Conservation Purpose
Year acquired or eased
Acquisition or easement funded by selected grant program(s)
Filters relate to one another. When you set the agency/owner/holder, all other filters in that set will be abridged. For example, setting the Land Trust Land owner to Allegheny Land Trust will then only give property names for that selection.

Turn on filter by selecting the button. It will turn green when activate. The attribute table will reflect these active filters. Once filters are set, you may export the table to a CSV file.

Turn off filter by selecting the button again.

Filters are available for all conservation feature layers.



Feature Selection

Select [Dropdown] [Close]

Select Clear

Layer

<input checked="" type="checkbox"/> Federal	0	...
<input checked="" type="checkbox"/> State	0	...
<input checked="" type="checkbox"/> Land Trust Lands	4	...
<input checked="" type="checkbox"/> Local Parks & Open Space	14	...
<input checked="" type="checkbox"/> Conservation Easements	2	...
<input checked="" type="checkbox"/> Farm Easements	26	...

Selection actions [Close]

- Zoom to
- Pan to
- Flash
- Export to CSV file
- Export to feature collection
- Export to GeoJSON
- Statistics...
- Create layer
- Save to My Content
- View in Attribute Table
- Clear selection

Select by rectangle

- Create new selection (Drag the mouse)
- Add to selection (Shift+Drag)
- Remove from selection (Ctrl+Drag)

Statistics

Field:

Number of values	4
Sum of values	316.15
Minimum	0.31
Maximum	151.27
Average	79.04
Standard deviation	66.48

Unselect all currently selected features



Download the Data

1. WeConservePA Logo
<http://www.weconservepa.org/>
2. WeConservePA GIS Page
<https://weconservepa.maps.arcgis.com/home/index.html>
3. Conservation Tools
<https://conservationtools.org/>
4. **Data Download**
<https://www.pasda.psu.edu/uci/SearchResults.aspx?originator=WeConservePA>
5. Feedback
[Google Forms](#) - Issues, suggestions, improvements, rating
6. News
<https://weconservepa.org/blog/category/conservation-projects/>

Questions?



Irina Beal

GIS Analyst

717.220.3272

ibeal@WeConservePA.org

610 N. 3rd St, Suite 301
Harrisburg, PA 17101

WeConservePA.org

<https://weconservepa.maps.arcgis.com/home/index.html>